



15" End Cap



Description

End caps close off terminal ends of a straight channel or transitional fitting to protect cables and provide a finished look.

- Tool-free installation

Product Specifications

Material: Lightweight, flame-retardant PVC (V-0 rated)

Color: Yellow

Dimensions (L x W x H): 15.3" x 4.5" x 1.0"

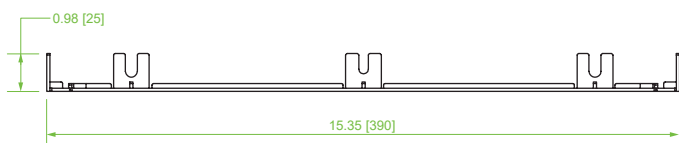
Weight: 0.22 lbs

Hardware: (2) VCT-HF03-B50 plastic T-bolts and (2) VCT-HF04_B50 plastic hex nuts for connection (sold separately)

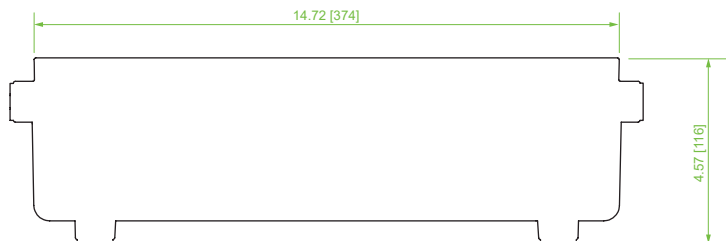
Compliance & Standards: UL2024 & UL94-V0

Selling Unit: 1 piece

Item Number	Description
VCT-360EC	15" End Cap



TOP VIEW



FRONT VIEW



SIDE VIEW