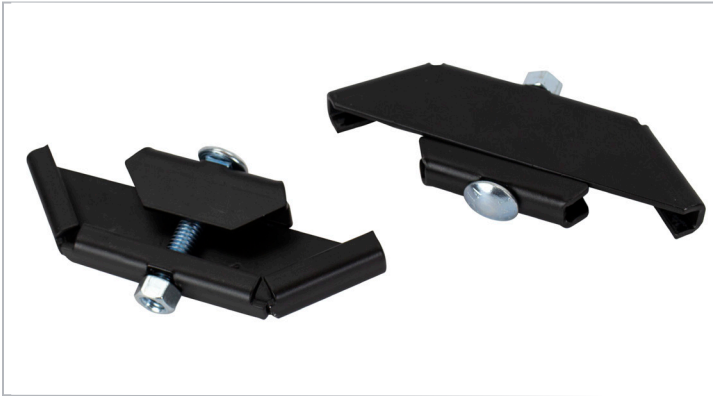




Butt Splice Kit - 90°



Description

This kit is used to fasten cable ladder sections end to end to change the cable ladder direction 90 degrees. Our butt splice kit consists of 2 butt splice clamps and 3/8-16 hardware. The components are constructed of high strength steel and are RoHS compliant.

Product Specifications

Product Type: Butt Splice Kit - 90°

Product Material: High Strength Steel

Compliance & Standards: RoHS Compliant

Kit Includes: (2) Butt Splice Clamps and 3/8-16 Hardware

Ordering Information

Description
90 Degree Butt Splice Kit For Cable Runway
Item #
VLR-A2EK90