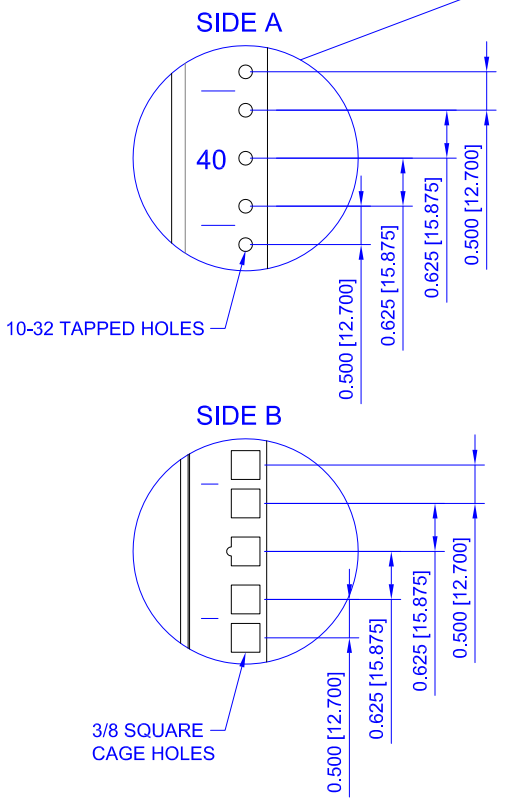
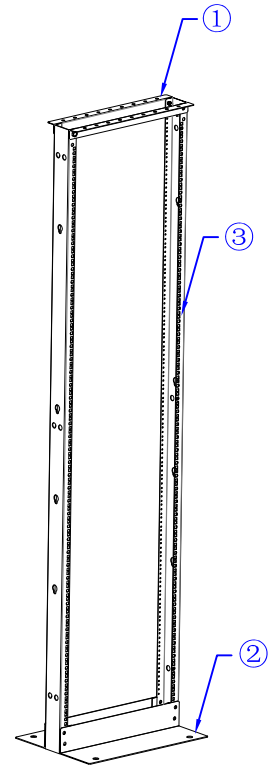
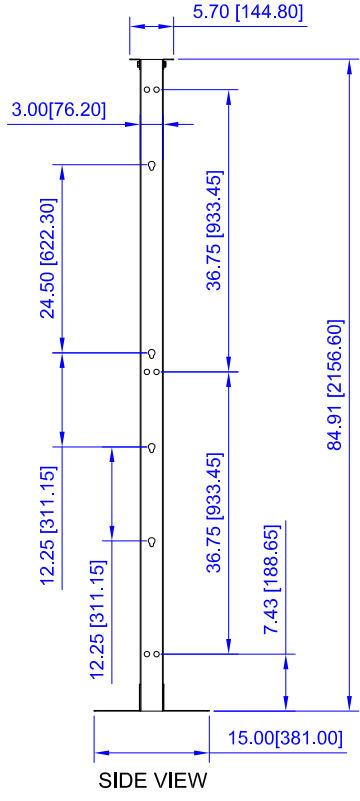
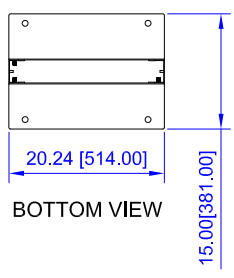
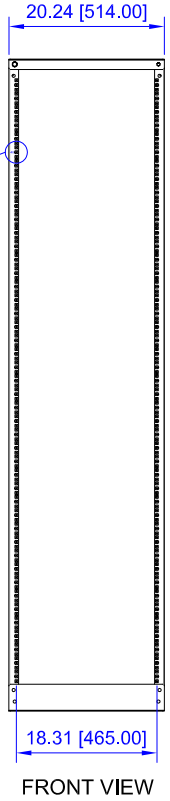
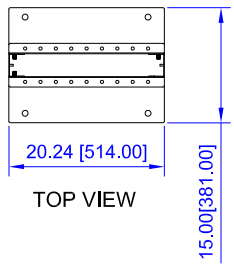


| | |
|------------------|--|
| COMPLIANCE | ANSI/EIA RS-310D IEC60297-2 DIN41494; Part 1 DIN41494; Part 7 |
| LOADING CAPACITY | 1,000 lbs static load |




| 3 | 2 | Rails | Steel | 14 gauge |
|----|-----|------------|----------|-----------|
| 2 | 2 | Base Plate | Steel | 12 gauge |
| 1 | 2 | Top Frame | Steel | 14 gauge |
| NO | QTY | NAME | MATERIAL | THICKNESS |

ITEM NO. **VR3-451**

DESCRIPTION **45U TWO POST STEEL RACK**

DATE **01/19/24** SCALE **none** SHEET **1 of 1** REV **1**



All dimensions in inches [mm]