



AV Cabinets



Description

Vericom AV Cabinets are a complete solution, designed for flexibility and security, making them a great choice for a multitude of audio and video applications. Fully assembled and ready to perform out-of-the-box, they are equipped with pre-installed shelving, blank panels, and tapped 10-32 mounting rails. Casters and adjustable leveling feet are provided for maximum mobility and sturdy placement.

Benefits

Equipment Protection

- Welded frame of heavy gauge cold-rolled steel
- Locking front door & rear access panel limit unwanted access to equipment
- Shelf straps and backstops secure equipment to shelves

Flexibility

- Accommodates most any audio/video equipment configurations
- Includes both casters & adjustable leveling feet for both fixed & mobile installations
- Front door, side & rear panels are all removable for convenient access to equipment
- Vented top & bottom panels provide free air cooling, and are compatible with an optional fan unit when additional cooling is needed

Complete Solution

- Fully assembled with shelves & blanking panels pre-installed
- Easy to order - everything you need in one item number, no need for a complicated configuration tool

Key Features

- Two [2] pair of heavy-duty, EIA-compliant 19" mounting rails, complete with 10-32 tapped holes and RU markings
- Removable, reversible, and lockable tempered-glass front door which opens a full 180°
- Cable entry slots with removable covers on top, back and bottom
- Top panel includes a provision for two [2] optional double fan units (maximum of four [4] total fans)



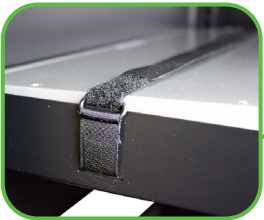
AV Cabinets



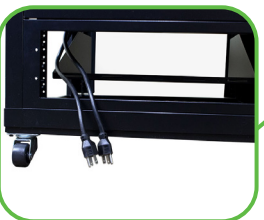
Straps and backstops help secure equipment in place



Optional fan unit compatible with top or bottom panels for additional cooling



Rear, Top & Bottom equipped with removable cable access panels



Pre-installed shelves and blanking panels



Mounting rails, complete with 10-32 tapped holes and easy to read RU markings



Product Specifications

Product Type: AV Cabinet

Frame Material: Heavy Gauge Cold Rolled Steel

Finish: Black Powder Coat

Dimensions (HxWxD): 30.75" x 23.6" x 23.6"

Rack Unit Quantity: 15U

Front Door: Removable, Reversible & Lockable Tempered Glass, Opens Full 180°

Side Panels: Solid, Full Height, Removable

Top Panel: (1) Solid Knockout, (1) Vented Knockout, (1) Removable Cable Entry Slot

[NOTE: Removing The Solid Knockout & The Vented Knockout Allows For The Possibility Of (2) Optional Double Fan Units]

Bottom Panel: (1) Solid Knockout, (1) Vented Knockout, (1) Removable Cable Entry Slot

[NOTE: Removing The Solid Knockout & The Vented Knockout Allows For The Possibility Of (2) Optional Double Fan Units]

Rear Panel: (1) ¾, Height Solid Removable Panel, (1) ¼ Height Removable Cable Knockout

Equipment Support: Two Pairs Of Mounting Rails, Adjustable Depth Rails (16.25" - 22"); 1.75" RU Spacing, Marked & Numbered On Rails; 19" W, EIA-310-D Universal Vertical Hole Spacing; 10-32 Threaded Holes

Grounding: 14 AWG Ground Wire Connects Door To Cabinet Frame

Static Loading Capacity: 15U = 500 lbs

Pre-Installed Accessories: Shelving, Blank Panels & Lacing Bars, Amount Varies By Size

Included Accessories: (4) Adjustable Leveling Feet, (4) Casters, Shelf Straps (Qty. Varies), Shelf Backstops (Qty. Varies), (1) Grounding Kit, (16) 10-32 Mounting Screws

Compliance & Standards: ANSI/EIA RS-310D, IEC60297-2, DIN41194; Part 1, DIN41494; Part 7



AV Cabinets

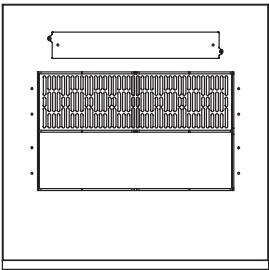
Item Number

VV2 - 15 1

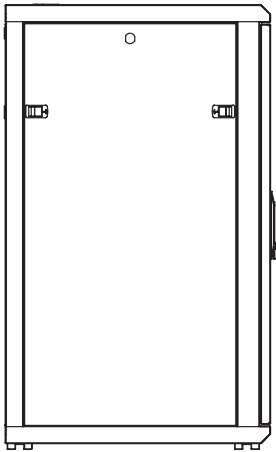
Pre-Installed Accessories

| Cabinet Height | # Lacing Bars | # Shelves | # Blanking Panels |
|----------------|---------------|------------------------|------------------------|
| 15U | 1 | 1 (1U), 1 (2U), 1 (3U) | 1 (1U), 1 (2U), 1 (3U) |

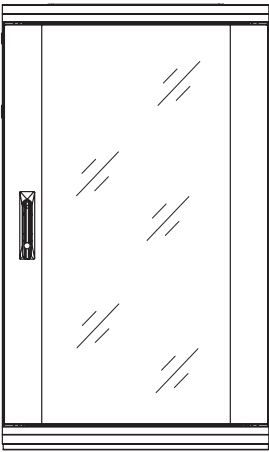
Technical Drawing



TOP VIEW



SIDE VIEW



FRONT VIEW